

# CARD eLearning™ Skills™

Adel C. Najdowski, Ph.D., BCBA-D



**CARD**  
CENTER FOR AUTISM  
& RELATED DISORDERS



**Skills**

# Introduction

---

- CARD eLearning™
  - Outline of
  - Demo
  
- Skills™
  - Outline of
  - Demo





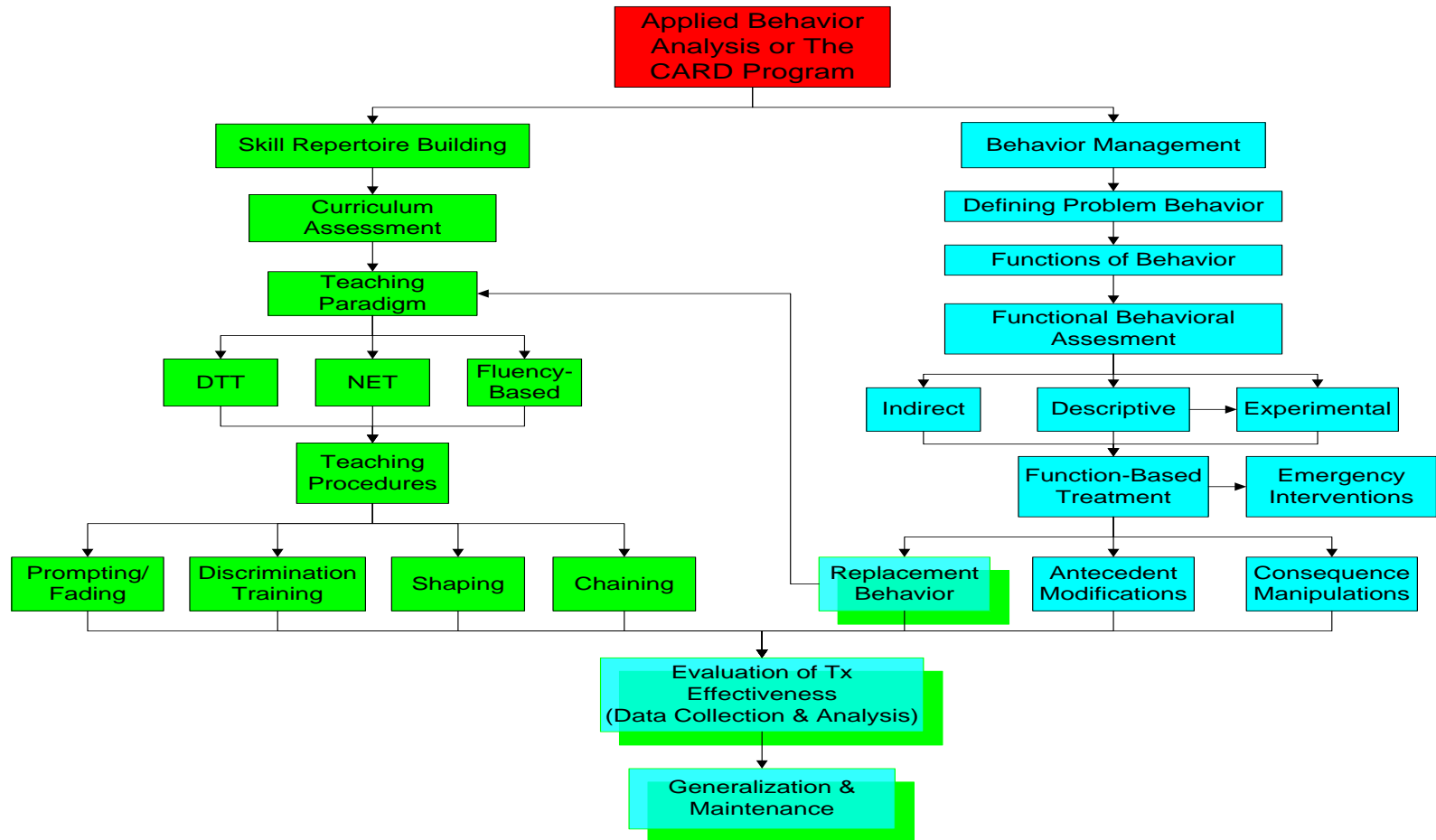
# The CARD eLearning™

---

- History
- Entry level training
- ABA techniques
- Based on over 40 years of research
- Self-guided
- Video clips
- Quizzes
- Ability to take notes
- Final exam



# eLearning Modules



# Published Study

Research in Autism Spectrum Disorders 4 (2010) 11–17



ELSEVIER

Contents lists available at [ScienceDirect](http://www.sciencedirect.com)

## Research in Autism Spectrum Disorders

Journal homepage: <http://ees.elsevier.com/RASD/default.asp>



### Evaluation of an eLearning tool for training behavioral therapists in academic knowledge of applied behavior analysis

Doreen Granpeesheh, Jonathan Tarbox, Dennis R. Dixon\*, Catherine A. Peters, Kathleen Thompson, Amy Kenzer

*Center for Autism and Related Disorders, United States*



# The CARD eLearning™

---

[Demo](#)



**SKILLS™**

The logo features the word "SKILLS" in a bold, black, sans-serif font. A green checkmark is positioned over the letter "I", and a green arrow points upwards and to the right, starting from the top of the "I" and extending over the "L". A small "TM" trademark symbol is located to the right of the "S". The entire logo is set against a light blue circular gradient background.

# Skills™

---

- History
- Online tool for
  - Comprehensive assessment
  - Curriculum design
  - Tracking progress during treatment



# Skills™

---

- Step 1
  - Enter child information
- Step 2
  - Assessment
- Step 3
  - Choose activities from 8 curricula
- Step 4
  - Start treatment and monitor progress



# Step 1: Enter the Child

---

- Basic demographics
- Ability to
  - Share data
  - Assign team members
  - Manage access rights



## Step 2: Assessment

---

- Every child is different...what do I teach my child?
- Identifies which skills the child exhibits versus need to be taught
- In order of typical development
- “yes” / “no” questions



# Published Study

Research in Autism Spectrum Disorders 5 (2011) 506–511



Contents lists available at ScienceDirect

## Research in Autism Spectrum Disorders

Journal homepage: <http://ees.elsevier.com/RASD/default.asp>



A comprehensive evaluation of language for early behavioral intervention programs: The reliability of the SKILLS Language Index

Dennis R. Dixon<sup>\*</sup>, Jonathan Tarbox, Adel C. Najdowski, Arthur E. Wilke, Doreen Granpeesheh

*Center for Autism and Related Disorders, USA*



## Step 3:

# Choose Activities and Build Treatment Plan

---



**CARD**  
CENTER FOR AUTISM  
& RELATED DISORDERS

**CARD**  
**eLearning**  
THE PREMIER ABA ON-LINE EDUCATOR FOR AUTISM

**Skills**

# Step 4: Start Treatment

---

- Activity Guides
- Monitor treatment progress



# Skills™ Website

---

[Demo](#)



# Upcoming Features

---

- IEP reports
- Challenging Behavior Module
- Analytics





- CARD eLearning™ and Skills™ free for schools and BCBAs for the rest of 2011
- To get access, call 877-975-4559 or email [a.ganther@skillsglobal.com](mailto:a.ganther@skillsglobal.com)

