



C.A.R.D.
Center for Autism & Related Disorders, Inc.
Established 1990

Media Contacts:

Daphne Plump
CARD, Inc.
Tel: 661.478.6512
d.plump@centerforautism.com

FOR IMMEDIATE RELEASE

August 02, 2010

World's Largest Autism Treatment Center Celebrates Milestone
CENTER FOR AUTISM & RELATED DISORDERS
HONORED at 20TH ANNIVERSARY GALA

SATURDAY, SEPTEMBER 25, 2010
LOS ANGELES

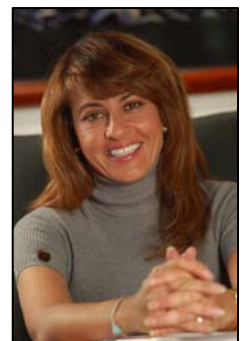
RENOWNED AUTISM EXPERT **DR. DOREEN GRANPEESHEH** HONORED

Los Angeles – The Center for Autism and Related Disorders, Inc. (CARD) will celebrate their 20th Anniversary at a star-studded gala on Saturday, September 25, 2010 at 6:30pm at the legendary Park Plaza located at 607 S. Park View Street, Los Angeles, CA.

The black-tie charity event is expected to draw 500 supporters including community leaders, leading autism researchers, CARD families and clients, CARD clinicians, and many surprise guests. Young people and their families who have received CARD services will be in attendance to share their inspiring stories.

"I was told to institutionalize my son when he was diagnosed with autism at the age of three," said Bryce Miller, mother to former CARD client, Brett. Brett was treated by CARD from 1994 to 1999, recovered and is now studying psychology at Moorpark College. "Thank goodness I found CARD back then. They worked miracles with my son and so many other children."

CARD Founder, Doreen Granpeesheh, PhD, BCBA-D, will be honored in a special tribute during the event. Her career in autism treatment spans over 30 years and she participated in some of the most noteworthy findings on the subject. She participated in the first major research study showing that recovery from autism is possible when intensive, early Applied Behavior Analysis (ABA) treatments are used. Her work with renowned psychologist Dr. Ivar Lovaas at UCLA in 1987 produced an almost 50% recovery rate for the children in the ABA program there. Dr. Granpeesheh started the Center for Autism & Related Disorders (CARD) in 1990 and quickly expanded ABA services throughout California, then to other major US cities. Today, CARD



operates 22 facilities worldwide and partners with several other agencies to ensure ABA treatment is disseminated to all those who need it.

“When I began my career, the incidence rate of autism was 1 in 10,000. Today, it’s 1 in 100 children,” says Dr. Granpeesheh. “This is an epidemic that we as a society are not keeping up with. So many children would benefit from treatment, but they have zero access because of lack of funding or qualified clinicians. This is not acceptable. Autism is treatable. This is why I started CARD and is why I’m so passionate about spreading treatment globally.”

Dr. Granpeesheh has served and continues to serve on the advisory boards of many autism organizations including The US Autism and Asperger's Association Scientific Advisory Board, the Autism File Magazine, Autism 360, 4-A Healing Foundation, Autism Society of America, Autism Human Rights and Discrimination Initiative Department of Developmental Disabilities for the State of Arizona Oversight Committee, and the California Senate Select Committee on Autism (ASD) & Related Disorders. She is the founding member and President of ACT Today!. Dr. Granpeesheh founded the Center for Autism & Related Disorders (CARD) in 1990.

Gala Honorary Committee Members include: Los Angeles Mayor Antonio Villaraigosa, Kelsey Grammer, Howie Mandel, Joe Mantegna, Camryn Manheim, Jane Kaczmarek, Ken and Linda Howard, Annette O’Toole, John Salley, the Dixie Chicks, Antonio Sabato, Jr., Jerry Penacoli, John Mendoza, Charles Downes, Leeza Gibbons, Ron Masak, Leven Rambin, Tom Bergeron, and Mariel Hemingway.

Special features of the event include a silent auction and cocktail reception at 6:30 p.m. with a live jazz band, followed by a dinner program at 8:00pmA post dinner party will be held from 10pm – 2am, with entertainment provided by DJ Crash. Individual tickets are \$100 - \$250. Reserved tables are \$1,500. For more information, please visit www.centerforautism.com/gala.

About the Center for Autism and Related Disorders, Inc. (CARD):

The Center for Autism and Related Disorders, Inc. (CARD) diligently maintains a reputation as one of the world’s largest and most experienced organizations effectively treating children with autism, Asperger’s Syndrome, PDD-NOS, and related disorders. Through their 22 satellite locations, CARD uses the principles of Applied Behavior Analysis (ABA) to develop individualized treatment programs that produce results for each child they serve. CARD provides autism services around the globe. For more information visit: www.centerforautism.com.

###

CENTER FOR AUTISM AND RELATED DISORDERS, INC.
19019 Ventura Blvd, Tarzana, CA 91356